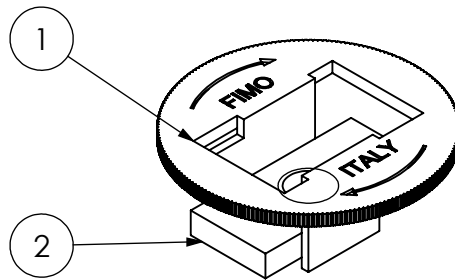
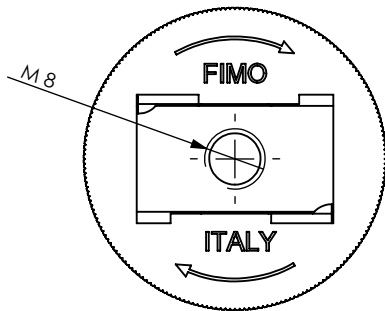
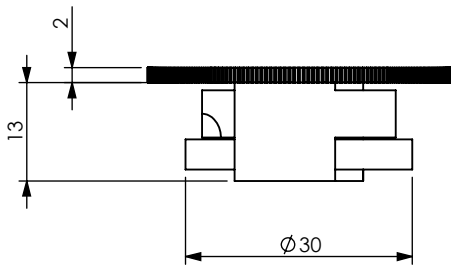


# PRODUCT DATA SHEET



## A) SPECIFICATIONS

- 1 Stainless steel self locking APA
- 2 Stainless steel sliding insert IS 8/14

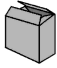

## B) PACKAGING INFORMATION



Packing in boxes.  
Label indicating:  
product code, article, quantity,  
production batch,  
FIMO logo and figure.  
( Customer code on request ).

## C) MOUNTING INSTRUCTIONS

On request

code	<b>6140010008</b>
article	ISL 8

	
100	0.0148kg

RI	DATE	DR	DATE	AP	Description: <b>ISL 8= selflocking insert with M8 nut</b>
02					
01					
00	19/01/2017	E.B.	19/01/2017	A.V.	
1 <sup>ST</sup> EMISSION					
 Setting Installation Standards			 RoHS Compliant - RoHS 2002/95/EC		Use: For quick mounting of M8 screw on PCI 40x22 sections.